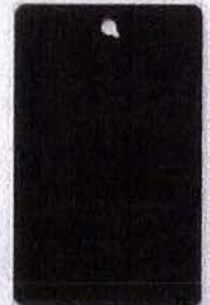
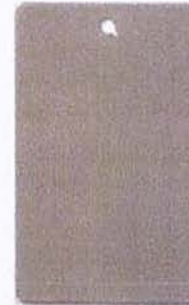




accent panel range



wood accent range



metal panel / mullion range

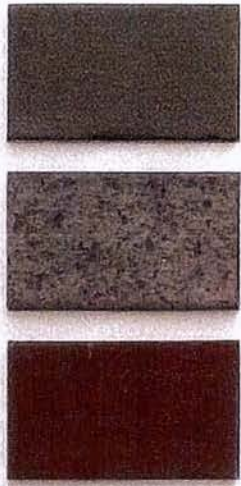
MRP REALTY
 SK&I
 RECEIVED
 D.C. OFFICE OF ZONING
 2012 SEP 23 AM 7:10

RiverFront Washington DC
 on the anacostia

ZONING COMMISSION
 District of Columbia
 september 20, 2012
 ZONING COMMISSION
 District of Columbia
 CASE NO. 04-14B
 EXHIBIT NO. 34
 34-14B



brick veneer range



accent brick range



base masonry veneer range



accent panel range



insulated glass range

MRP REALTY
 SK&I
 RECEIVED
 D.C. OFFICE OF ZONING
 2012 SEP 23 AM 7:10

RiverFront | Washington DC
 on the anacostia

september 20, 2012

© 2012 MRP & SK&I Architectural Design & Planning, LLC